



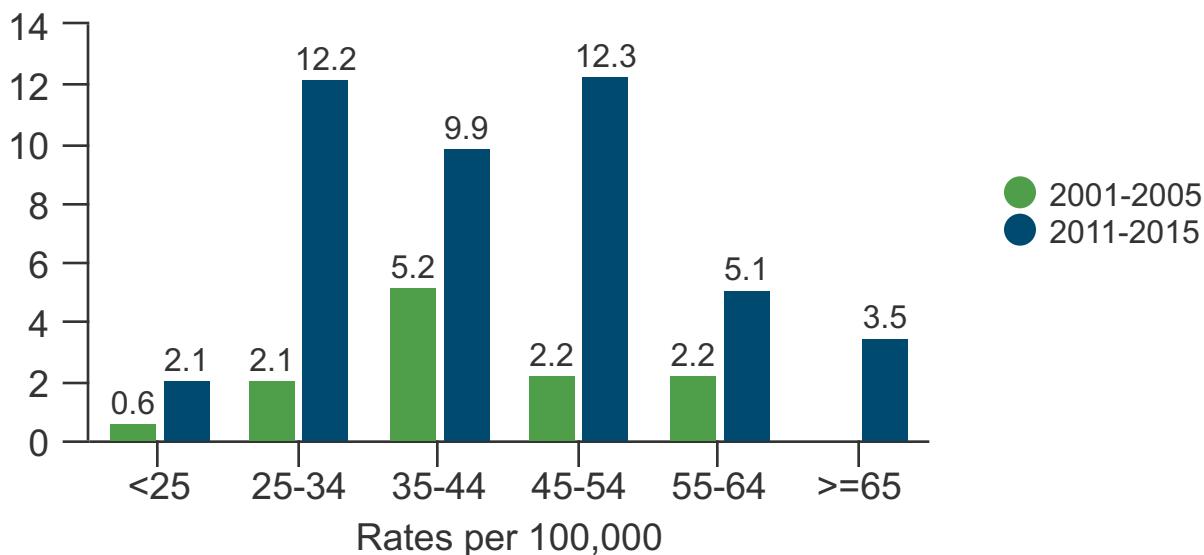
CLAY COUNTY

PUBLIC HEALTH CENTER



Opioid Epidemic in Clay County, Missouri

Age Specific Death Rates for Opioid Overdoses in Clay County

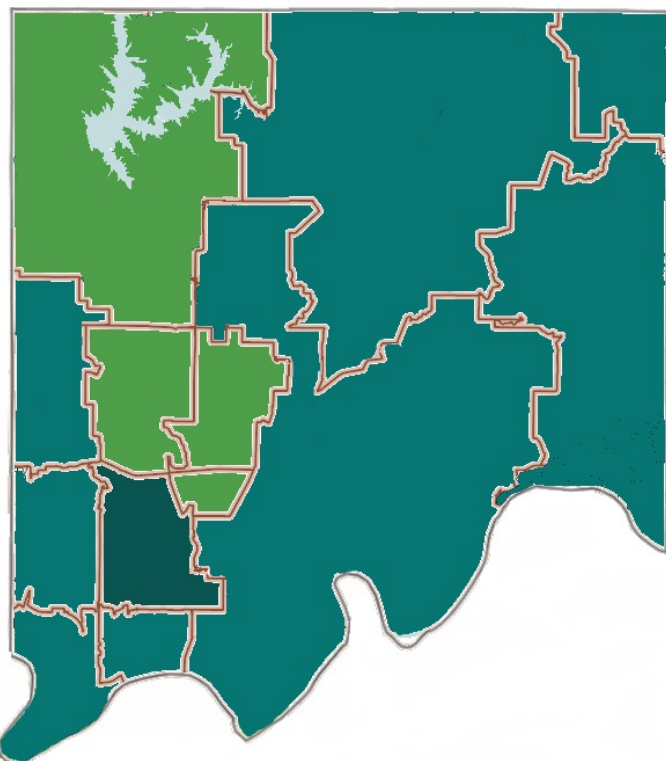


Percent increase in death rates from 2001-2005 to 2011-2015 in Clay County

Age Range	% Increase
<25	249.02%
25-34	286.20%
35-44	91.36%
45-54	467.60%
55-64	135.57%
>=65	N/A

MO DHSS

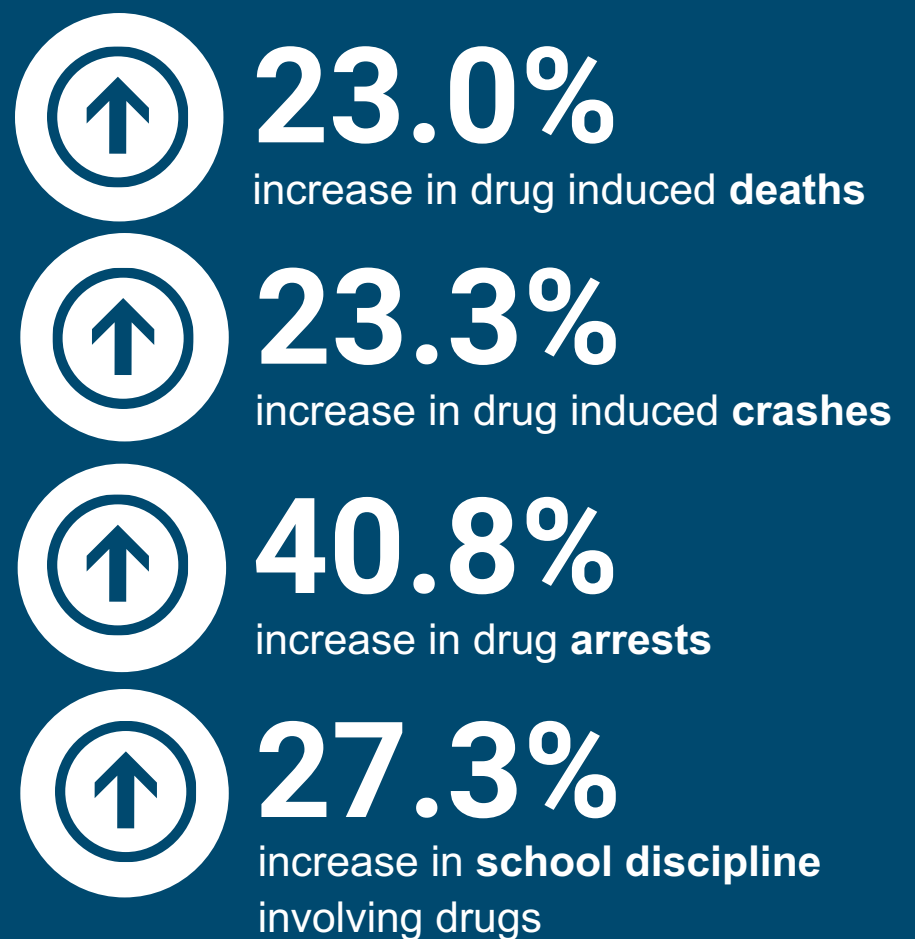
Clay County Opioid Overdose Death Count by Zip Code, 2011-2015



- **1-5 deaths:** 64089, 64156, 64157
- **6-10 deaths:** 64024, 64060, 64068, 64116, 64117, 64118, 64155
- **11-15 deaths:** 64119

MO DHSS

Clay County Drug Related Statistics, 2013 to 2015



MO DHSS

People who are addicted to...



ALCOHOL

are

2x



MARIJUANA

are

3x



COCAINE

are

15x



Rx OPIOID PAINKILLERS

are

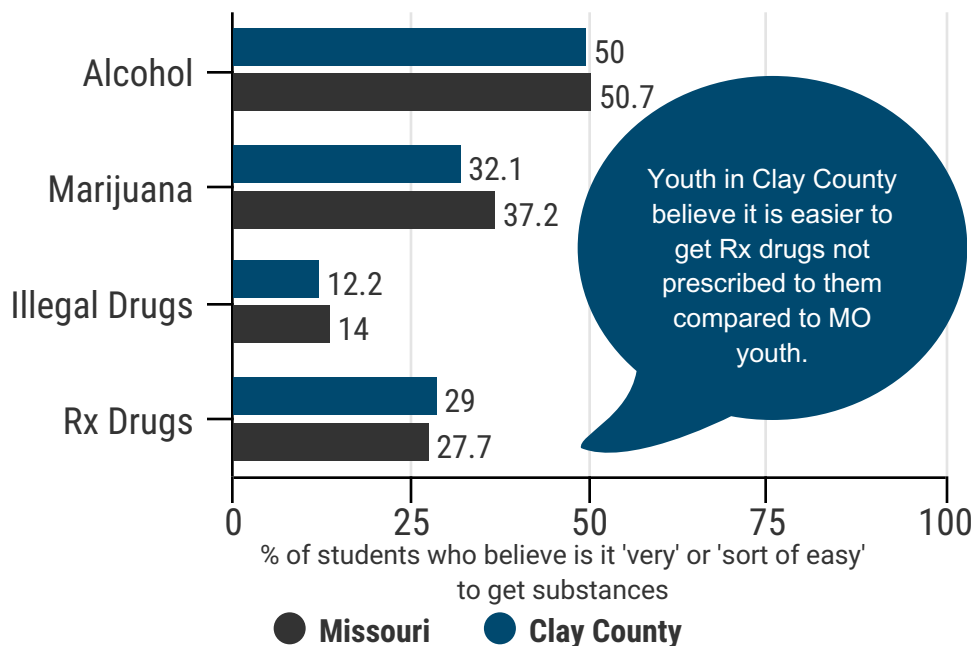
40x

...more likely to be addicted to heroin.

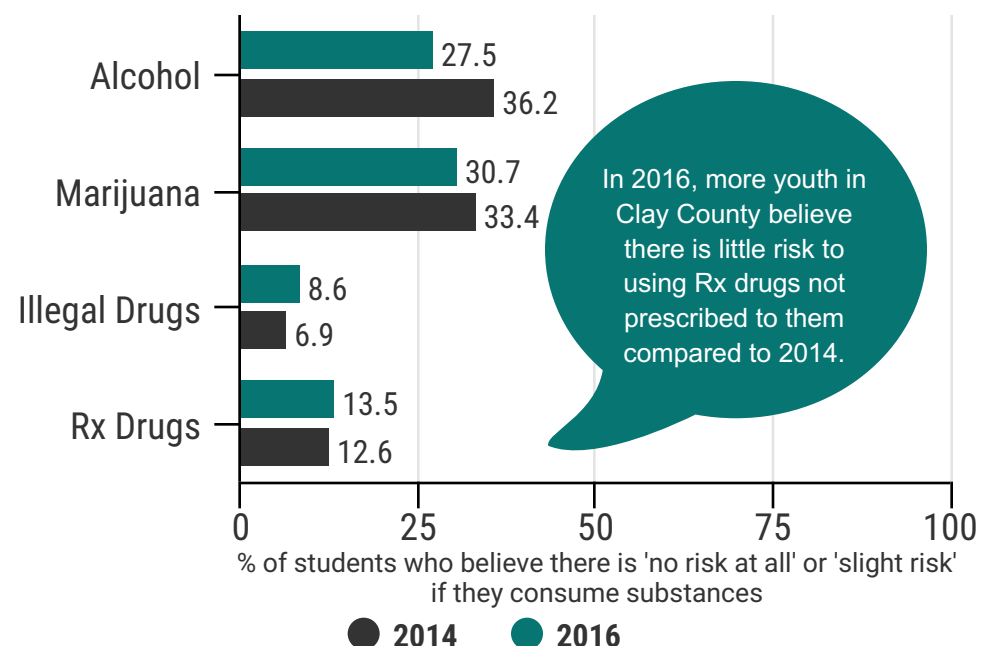
National Survey on Drug Use and Health

Missouri Student Survey Data (6th-12th Graders in Clay County)

Availability, Clay County/Missouri, 2016



Perception of Harm, Clay County, 2014/2016

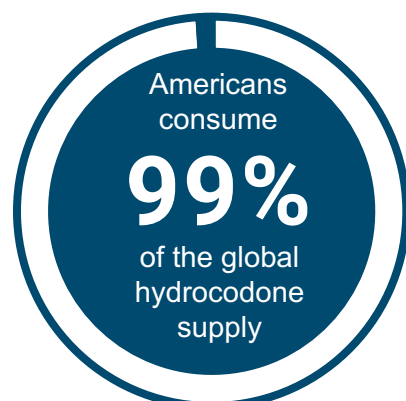
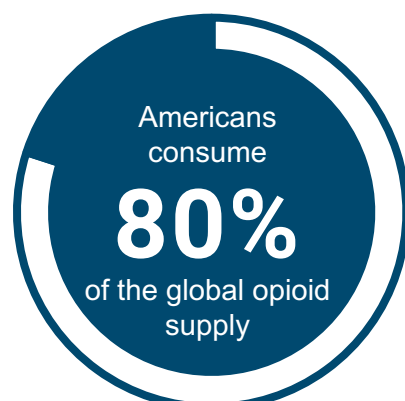


State Numbers

Missouri Opioid Deaths, 2016

- 908 total opioid- and heroin- related deaths in 2016 (35% increase from 2015)
- 2.5 people died each day due to opioid overdose
- 1 out of every 66 deaths was due to opioid or opiate abuse

MO DHSS



National Context



Opioid overdose deaths in the US have more than **quadrupled** since 1999. Over 28,000 Americans died from opioid overdoses in 2014. Approximately 19,000 of those deaths were caused by prescription opioid painkillers.

In 2013, the aggregate costs for prescription opioid overdose, abuse, and dependence in the US was about



78.5 billion