

REPORTED CASES OF FLU IN CLAY COUNTY SHOW

66%

Did not receive their flu shot

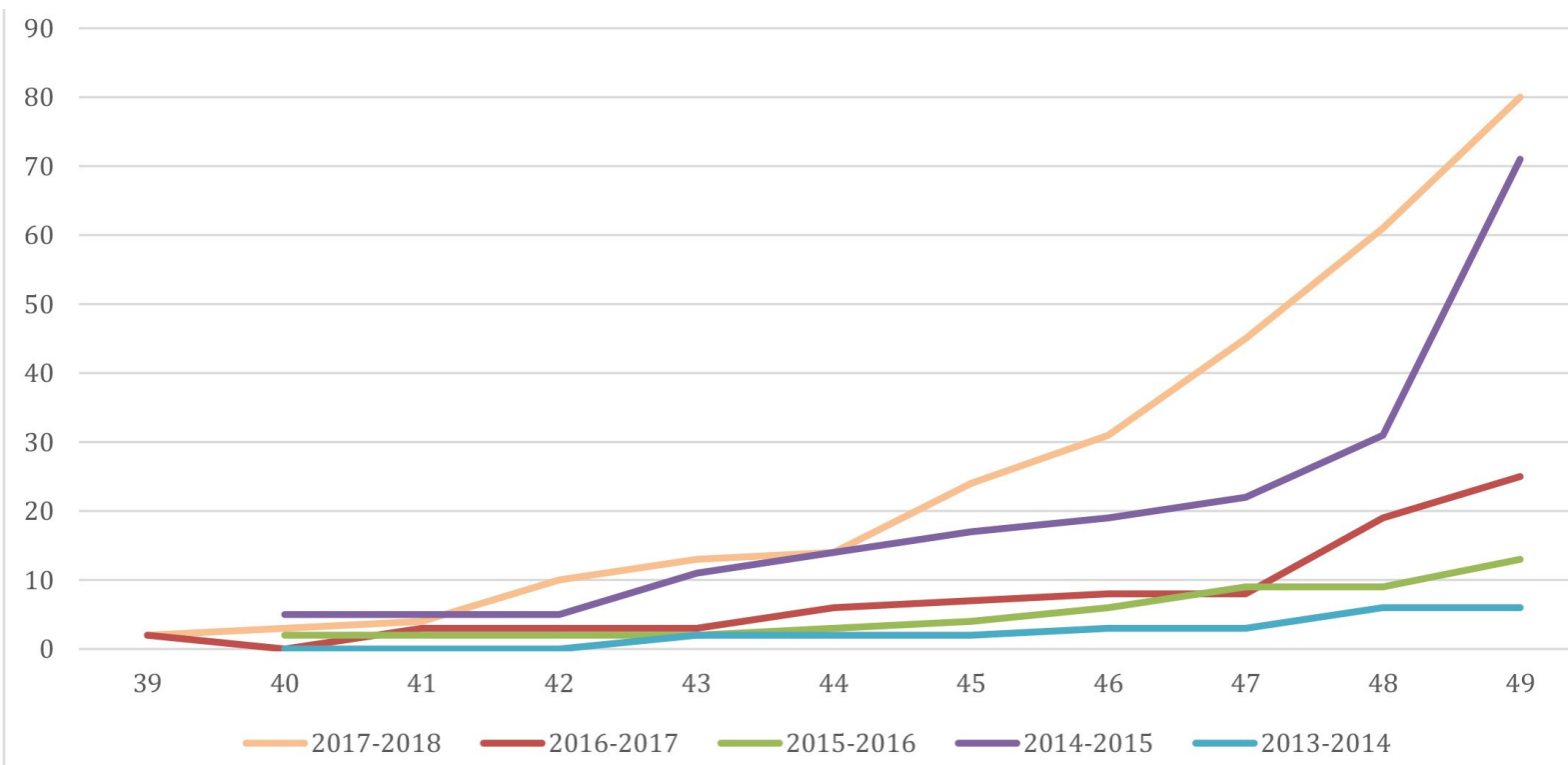
20%

Children ages 2-4

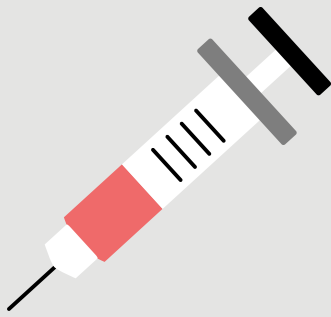
76%

Influenza A (usually more severe)

Influenza Cases by Week and Year



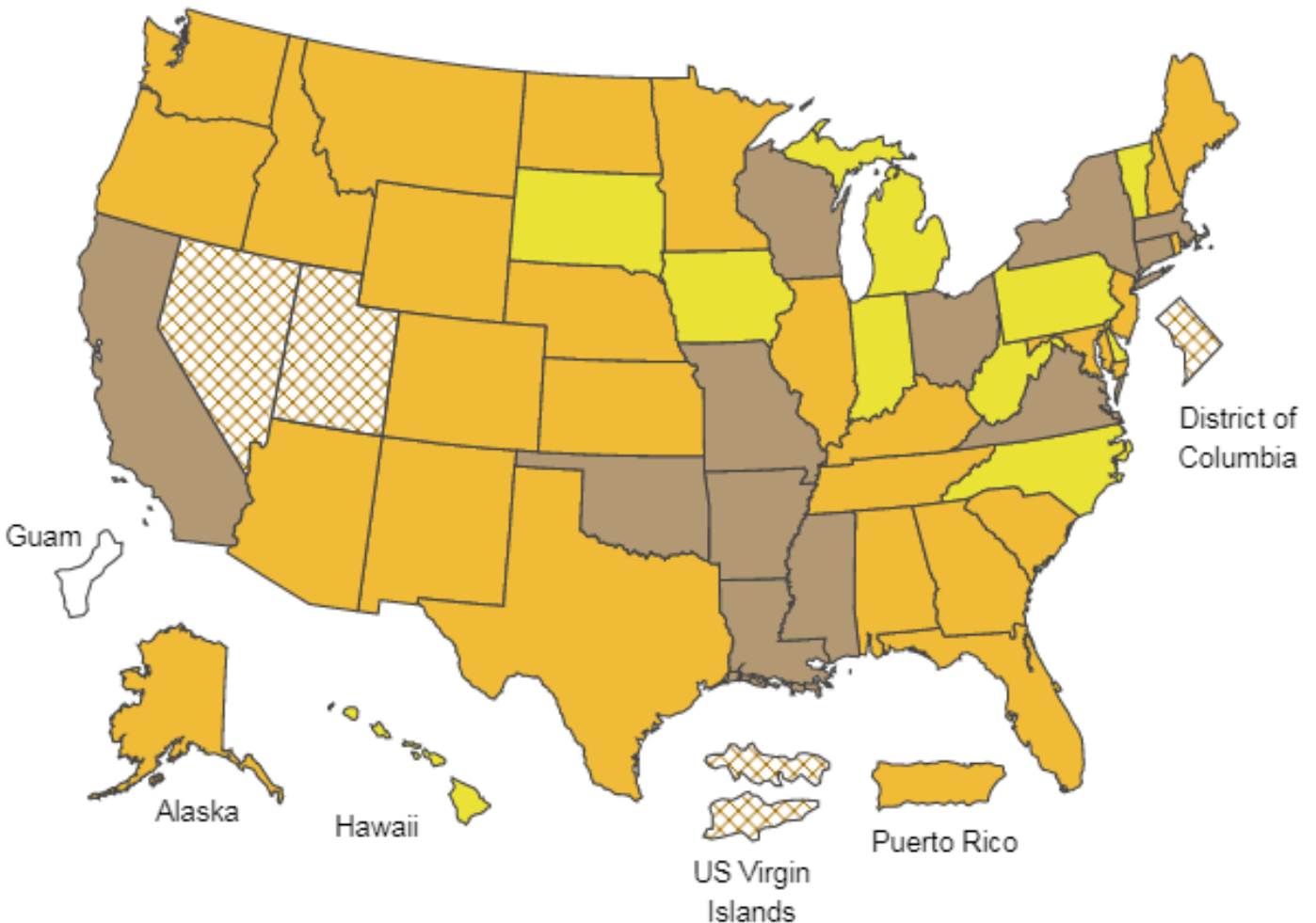
Reported cases for the 2017-2018 flu season are shown in orange. More cases than normal are being seen in Clay County



Get your flu shot. It's not too late! The flu vaccine is the first and most important step in protecting against flu viruses.



Take everyday preventive actions to stop the spread of germs, and take flu antiviral drugs if your doctor prescribes them.



Missouri is one of only a few states, displayed in brown, to have widespread flu activity. This is rare since it is so early in the flu season.